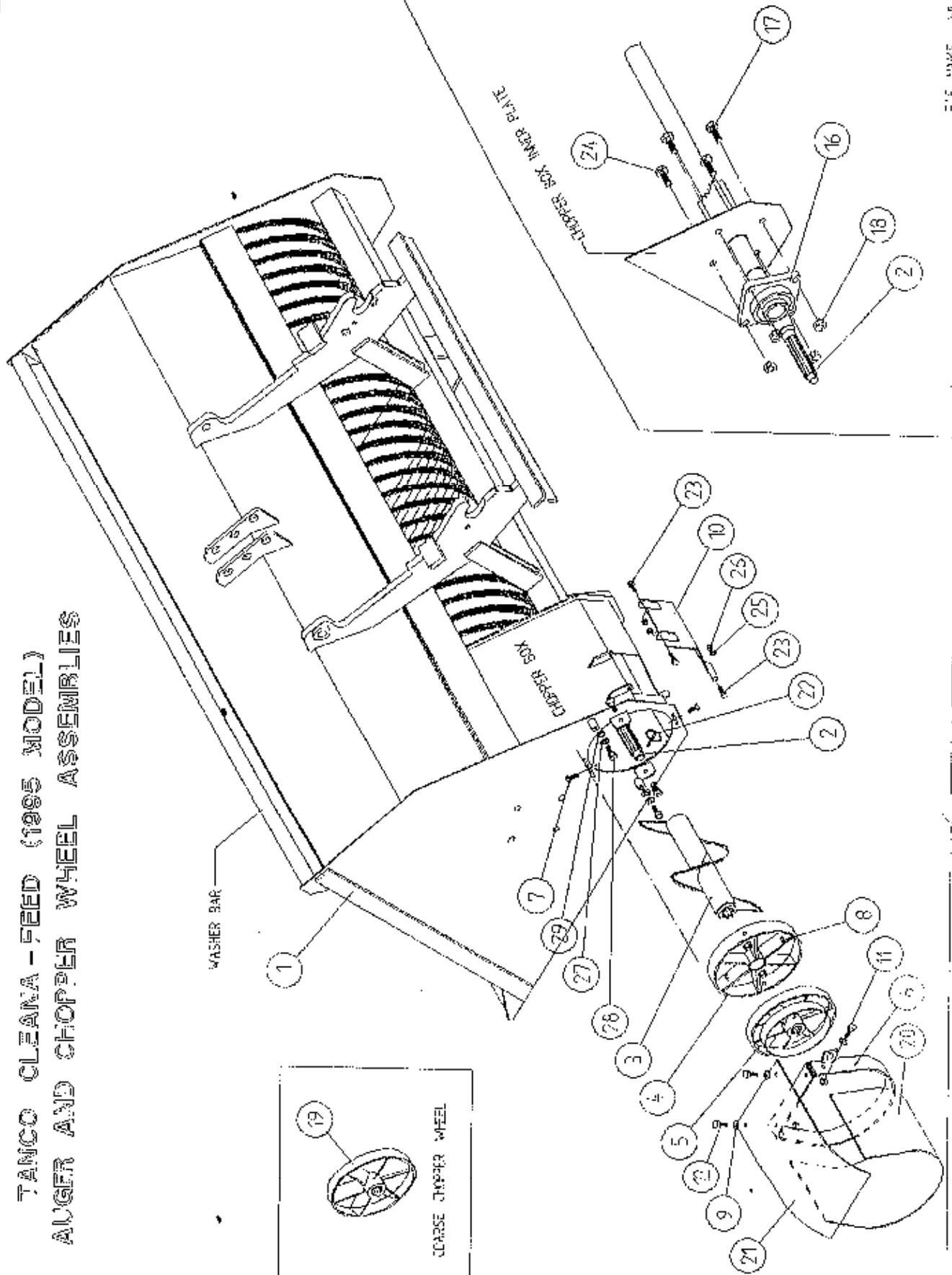


**TANCO CLEANA-FEED  
HYDRAULIC MODEL 1995  
OPERATORS HANDBOOK  
AND  
PARTS LIST  
Wi60-M0895**

TANCO CLEANA-FEED (1985 MODEL)  
 AUGER AND CHOPPER WHEEL ASSEMBLIES



## TANCO CLEANA-FEED (1995 MODEL)

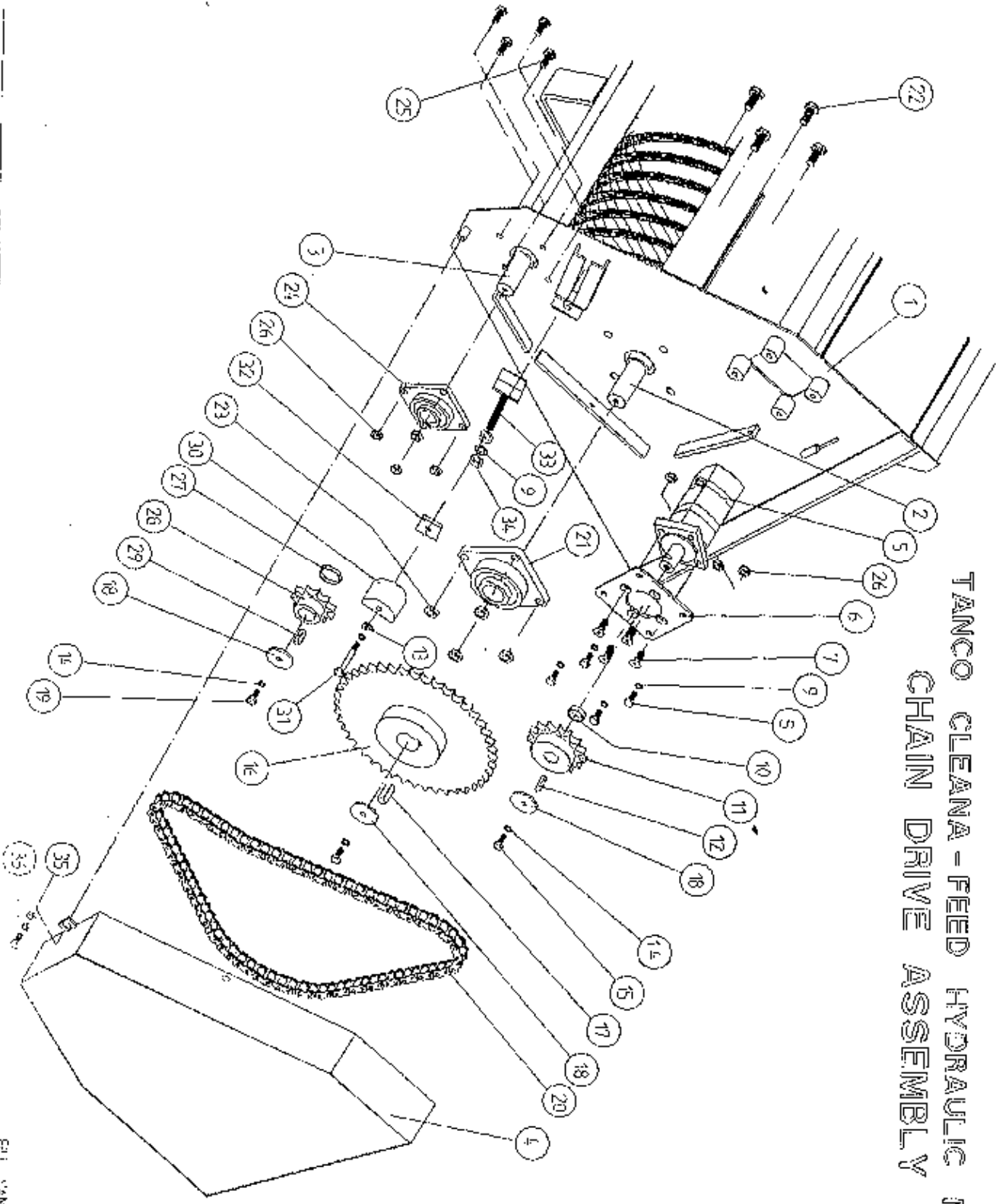
WI60-PL14

## AUGER, CHOPPER BOX COVER PLATE &amp; HYD DOOR ASSY

## PARTS LIST

ITEM NO	DESCRIPTION	QTY	PART NO
1.	MAIN FRAME ASSY.	1	WI60-MF2
2.	AUGER SHAFT	1	WI60-AGS
3.	AGITATOR ASSY.	1	WI60-AGA
4.	CHOPPER BOX COVER PLATE	1	WI60-CBCP
5.	HYDRAULIC DOOR	1	WI60-HDA
6.	M12 HEX HD. SET x 40mm LONG	4	Z26-084S
7.	1 1/2" X 3/16" DIA SPLIT PIN	1	Z03-21-14
8.	REPLACEMENT TIPS (WELD ON)	17	WI60-Q14
9.	FLANGE BEARING 2" UCF211E-32	1	Z06-49
10.	M16 HEX HD SET x 45mm LONG	4	Z26-123S
11.	M16 LOCKNUTS	4	Z23-16
12.	1.2mm DIA SPRING WASHER	2	Z12-02-12
13.	COLLAR	2	WI60-179

TANCO CLEANA - FEED HYDRAULIC MODEL  
CHAIN DRIVE ASSEMBLY



FILE NAME: W160-212

## TANCO CLEANA-FEED HYDRAULIC MODEL (1995)

W160-PL2

## CHAIN DRIVE ASSY

## PARTS LIST

ITEM NO.	DESCRIPTION	QTY	PART NO.
1.	MAIN FRAME ASSY	1	W160-MF2
2.	AGITATOR (INPUT SHAFT)	1	W160-AGA
3.	AUGER SHAFT	1	W160-ASA
4.	CHAIN GUARD	1	W160-MG
5.	CHARLYN HDYRAULIC MOTOR 304 cc	1	Z01-02-RF200
6.	HYD. MOTOR MOUNTING PLATE	1	W160-017
7.	M12 X 40mm ALLEN C/S SCREW	4	Z13-5-12x40
8.	M12 HEX HD. SET x 30mm LONG	4	Z26-082S
9.	12mm SPRING WASHER	6	Z12-02-12
10.	SPACER	1	W160-093
11.	1" PITCH B.S. SPROCKET 15T 1.25 BORE	1	Z06-I60-046
12.	KEY FOR HYD. MOTOR	1	Z29-67
13.	12mm DIA FLAT WASHER	1	Z11-02-121
14.	10mm SPRING WASHER	4	Z12-02-10
15.	3/8" UNC HEX HD BOLT x 1" LONG	1	Z27-223S
16.	1" PITCH B.S. SPROCKET 45T 2" BORE	1	Z06-I60-045
17.	5/8" SQ KEY x 45mm LONG	1	WM55-KS58
18.	LOCKING COLLAR	3	W160-090
19.	M10 HEX HD SET x 25mm	2	Z26-061S
20.	1" PITCH BS CHAIN x 73 PITCHES (INCLUDING OGGSET K JOINER)	1	Z09-I60
21.	FLANGE BEARING 2" UCF 211E-32	1	Z06-49
22.	M16 H/T HEX. HD. SETS x 45mm LONG(S)	4	Z26-I23S
23.	M16 LOCKNUTS	4	Z23-16
24.	FLANGE BEARING 1.1/2" UCF208E-24	1	Z06-06
25.	M12 HEX HD. SET x 40mm	4	Z26-084S
26.	M12 LOCKNUTS	4	Z23-12
27.	SPACER	1	W160-092
28.	1" PITCH B.S.SPROCKET 15T 1.5" BORE	1	Z06-I60-046S
29.	7/16" SQ KEY x 38mm LONG	1	W160-KS716
30.	CHAIN TENSIONER BLOCK	1	W160-107
31.	M12 H/T HEX HD. BOLT x 90mm LONG	1	Z26-091B
32.	CHAIN TENSIONER LOCKING FLAT	1	W160-094
33.	CHAIN TENSIONER	1	W160-CTBA
34.	M12 HEX NUT	2	Z18-12
35.	COLLAR	1	W160-178
36.	M10 HEX HD SET x 20mm LONG (TUFLOCK)	1	Z26-060ST

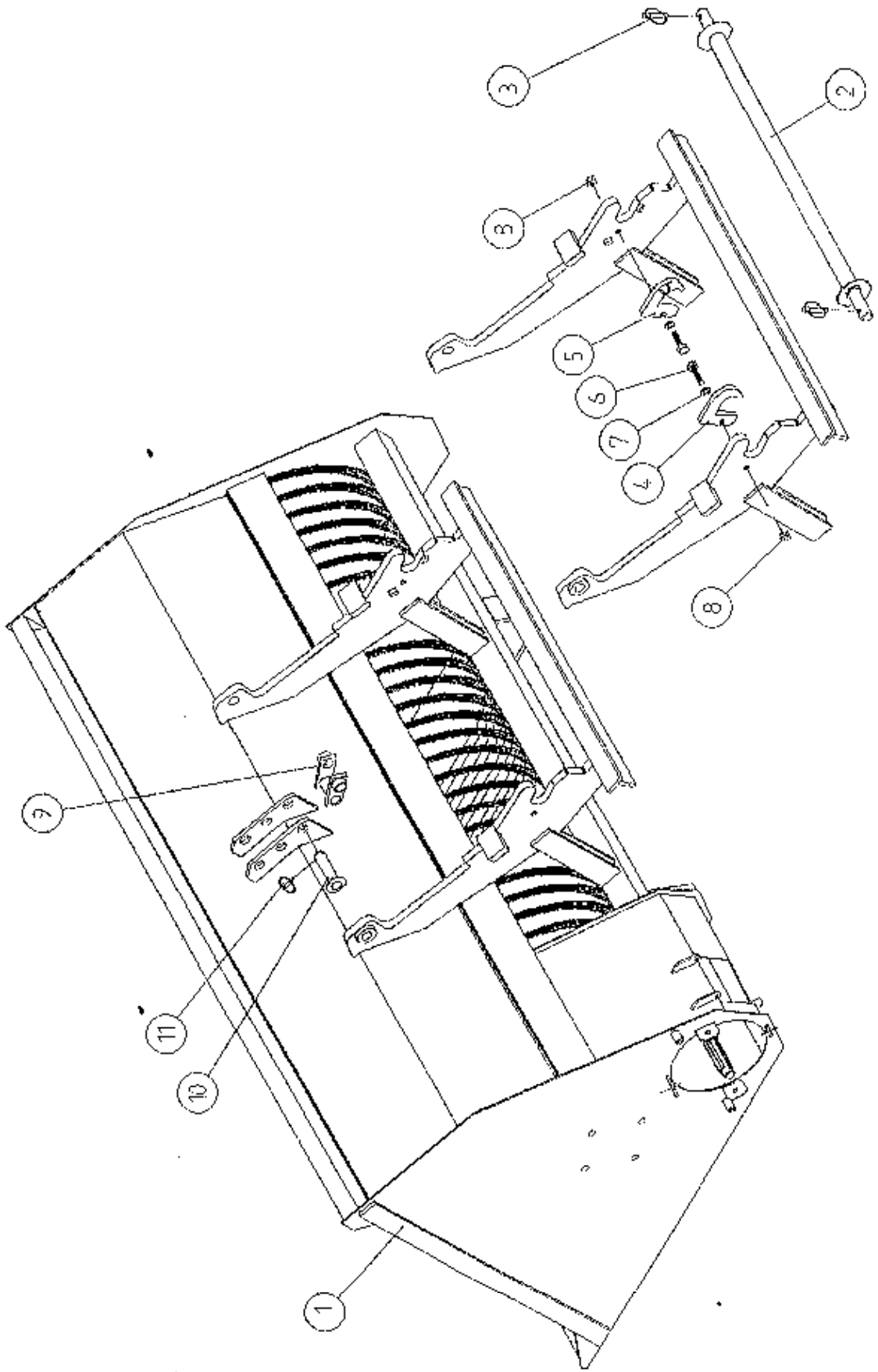
## TANCO CLEANA-FEED

## AUGER AND CHOPPER WHEEL ASSEMBLIES

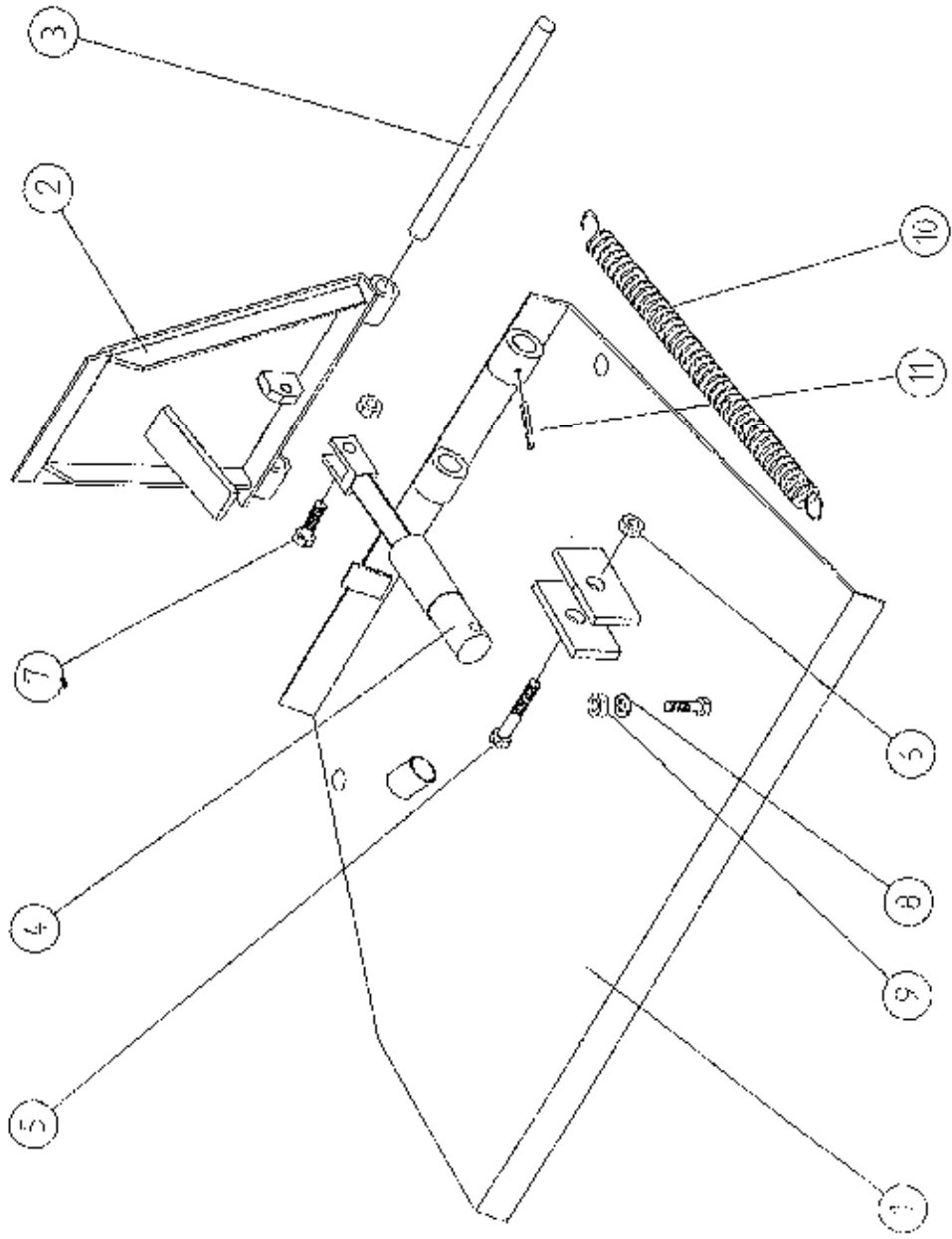
## PARTS LIST

ITEM NO	DESCRIPTION	QTY	PART NO.
1.	MAIN FRAME ASSY.	1	W160-MF2
2.	AUGER SHAFT	1	W160-ASA
3.	AUGER ASSY.	1	W160-AUG
4.	FIXED WHEEL ASSY.	1	W160-FW1
* 5.	CHOPPER WHEEL ASSY. FINE	1	W160-CWA
6.	CHUTE ASSY.	1	W160-RCA
7.	M10 HEX HD SET x 25mm LONG	4	Z26-061S
8.	M10 LOCKNUTS	4	Z23-10
9.	8mm DIA MUD FLAP WASHERS	7	Z11-02-081
10.	CHOPPER BOX BOTTOM TRAP DOOR ASSY.	1	W160-TD1
11.	M8 LOCKNUTS	9	Z23-08
12.	M8 HEX HD SET x 25mm LONG	7	Z06-0395
16.	FLANGE BEARING 2" UCF 211E - 32	1	Z06-49
17.	M16 H/T HEX HD SET x 45mm LONG	4	Z26-123S
18.	M16 LOCKNUT	4	Z23-16
*19.	CHOPPER WHEEL ASSY. COARSE (OPTIONAL)	1	W160-CWAC
20.	RUBBER CHANNEL	1	W160-144
21.	RUBBER FLAP	1	W160-143
22.	7/16" DIA LINC PIN	1	Z03-22-06
23.	M8 HEX HD SET x 25mm LONG	3	Z26-040S
24.	M16 SET x 45mm LONG (SPECIAL)	1	W160-100
*25.	8mm DIA SPRING WASHER	1	Z12-02-08
*26.	M8 HEX NUT	1	Z18-08
*27.	10mm DIA SPRING WASHER	2	Z12-02-10
*28.	M10 HEX HD SET x 20mm LONG	2	Z26-060ST
*29.	COLLAR	2	W160-178

TANCO CLEANA - FEED (1995 MODEL)  
QUICK PICK-UP BAR ASSEMBLY



TANCO CLEANA - FEED (1995 MODEL)  
CHOPPER BOX COVER PLATE & HYDRAULIC LID ASSEMBLY





## TANCO CLEANA-FEED (1995 MODEL)

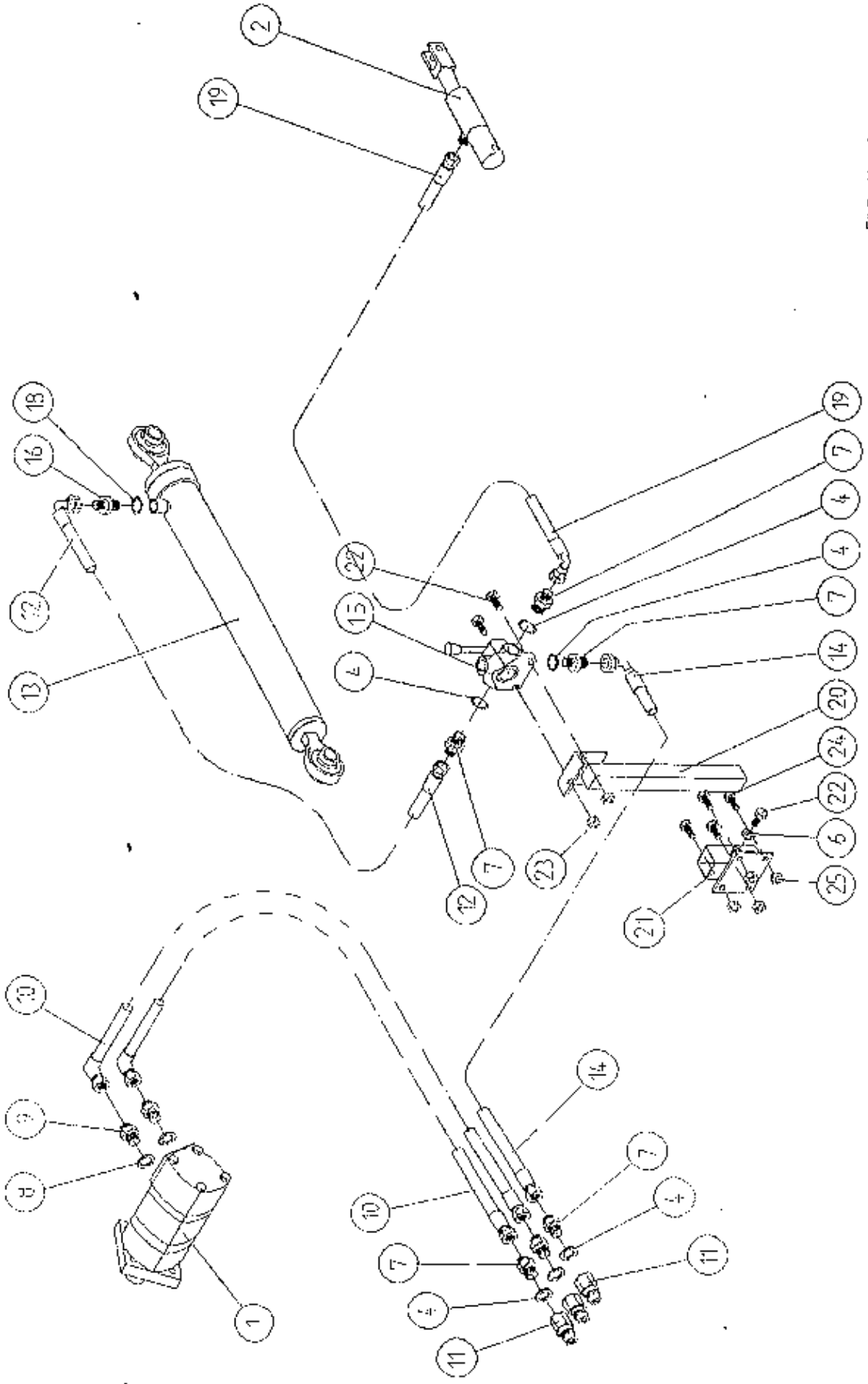
Wi60-PL11

## QUICK PICK-UP BAR ASSEMBLY

## PARTS LIST

ITEM NO	DESCRIPTION	QTY	PART NO
1.	CLEANA-FEED MAIN FRAME	1	Wi60-MF2
2.	PICK-UP BAR	1	WR59-QFU
3.	7/16" DIA LINCH PINS	2	Z03-22-06
4.	LATCH ASSY RHS	1	Wi60-QAHR
5.	LATCH ASSY LHS	1	Wi60-QAHL
6.	M12 HEX HD SET x 50mm LONG	2	Z26-086S
7.	12mm DIA FLAT WASHER	2	Z10-02-12
8.	M12 LOCKNUT	2	Z23-12
9.	LINK ASSY	1	Wi60-LA
10.	TOP LINK PIN	1	Z03-03-54
12.	6mm LINCH PINS	1	Z03-22-03

TANCO CLEANA - FEED HYDRAULIC MODEL 3 PT LINKAGE MOUNTED  
 HYDRAULIC COMPONENTS



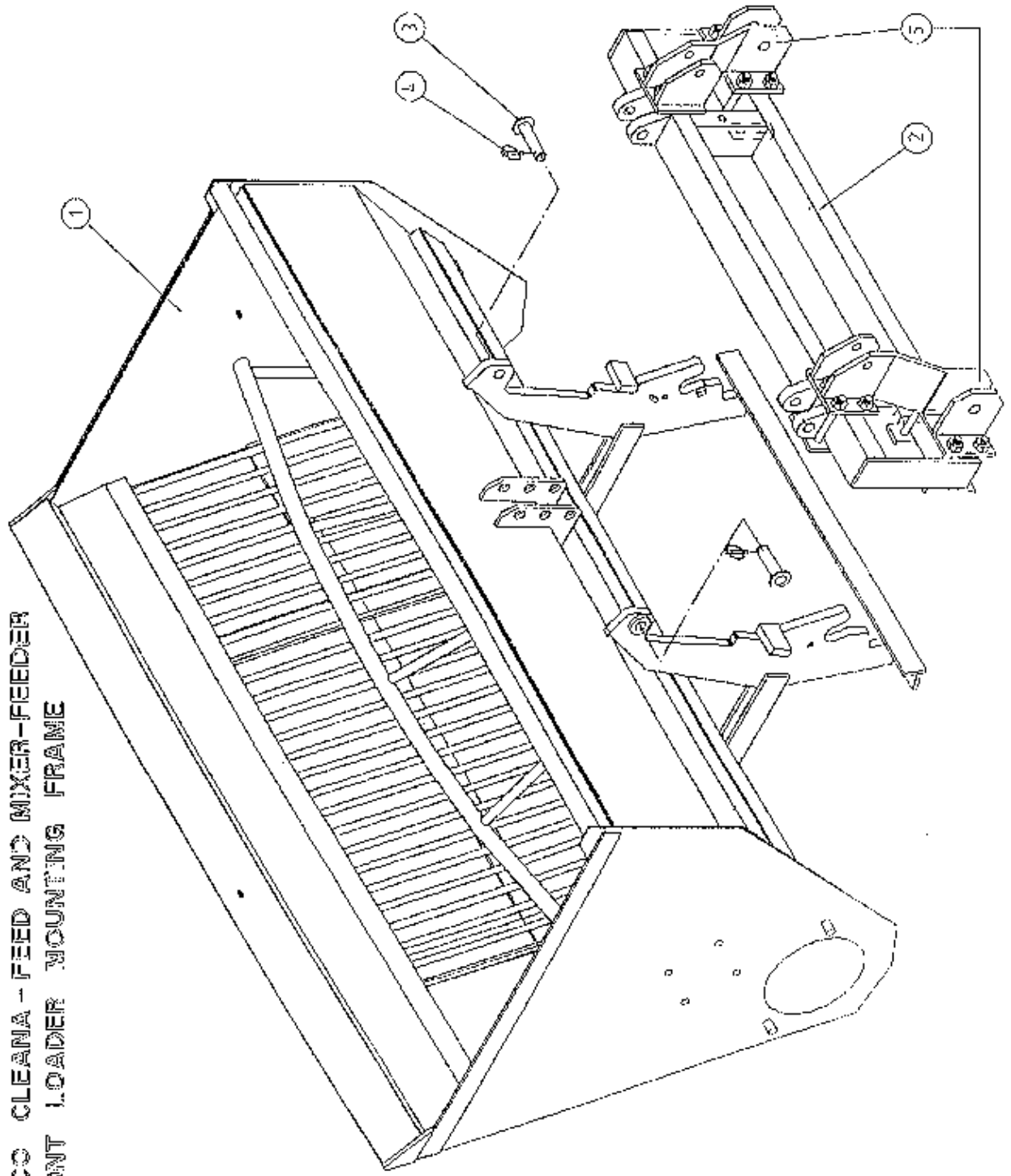
FILE NAME W760-PL9

W160-PL12

TANCO CLEANA-FEED (HYDRAULIC MODEL) 3 POINT LINKAGE MOUNTED  
HYDRAULIC COMPONENTS  
PARTS LIST

ITEM NO	DESCRIPTION	QTY	PART NO
1.	CHARLYN HYDRAULIC MOTOR 304cc	1	Z01-02-RF200
2.	HYDRAULIC CYLINDER	1	M2129C
3.	3/8" FEMALE x 3/8" MALE ADAPTOR	1	Z01-05-06-06
4.	1/2" DOWTY WASHER	6	Z01-04-03
6.	M10 HEX NUT	1	Z18-10
7.	1/2" MALE x 3/8" MALE ADAPTOR	6	Z01-06-06-08
8.	"O" RING	2	Z01-C4-30
9.	7/8" UNF x 3/8" MALE ADAPTOR	2	Z01-09-14 UNF
10.	84" ST/D90 3/8" D/W HOSE	2	Z38-R2-84 S9
11.	1/2" MALE Q/R COUPLING	3	Z01-15-081
12.	60" ST/90D 3/8" D/W HOSE	2	Z38-R2-60-S9
13.	HYDRUALIC TOP LINK 29" C.C.	1	Z01-01-TL29S
14.	48" ST 90 3/8" D/W HOSE	1	Z38-R2-48-S9
15.	3 WAY DIVERTER VALVE 1/2" BSP	1	Z01-03-102
16.	3/8" x 3/8" MALE/MALE ADAPTOR 0.060 RESTRICTOR	1	Z01-03-04
17.	3/8" X 3/8" MALE / MALE ADAPTOR	1	Z01-06-06-06
18.	3/8" DOWTY WASHER	1	Z01-04-02
19.	120" ST/90 3/8" D/W HOSE	1	Z38-R2-120-S9
20.	DIVERTOR VALVE MOUNTING BRACKET	1	W160 - DVM1
21.	SOCKET FOR VALVE MOUNTING BRACKET	1	W160-SVM1
22.	M10 HEX HD SET x 30mm LONG	3	Z26-062S
23.	M10 LOCKNUT	2	Z23 - 10
24.	M8 HEX HD BOLT x 30mm LONG	1	Z26-043B
25.	M8 LOCKNUT	1	Z26-08

TANCO CLEANER - FEED AND MIXER-FEEDER  
FRONT LOADER MOUNTING FRAME



TANCO CLEANA-FEED (1995 MODEL)

Wi60-PL13

FRONT MOUNTING FRAME

PARTS LIST

ITEM NO	DESCRIPTION	QTY	PART NO
1.	CLEANA-FEED (COMPLETE)	1	Wi60
2.	U.G. ATTACHMENT FRAME	1	Wi60-UGAF
3.	PINS	2	Z18-968
4.	6mm LINCH PINS	2	Z03-22-03
5.	'U.G.' FRONT MOUNTING BRACKETS	1 SET	See Page No.19

### Maintenance

1. Grease the 4 bearings weekly, two are located inside the chopper box and the other two inside chain cover. Item 21 and 24 page 8, Item 16 page 10 and Item 9 page 14.
2. Grease chain weekly
3. Oil door hinge weekly.

### Chain

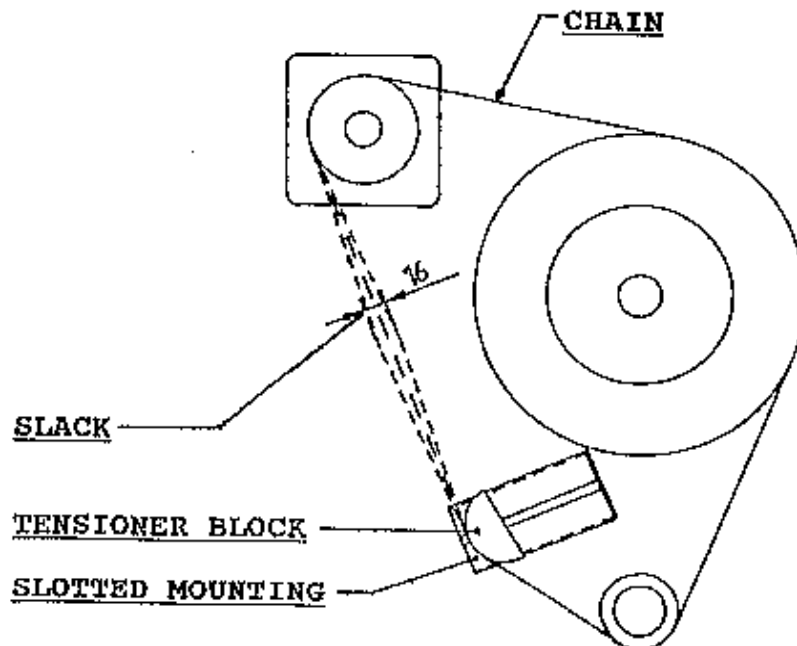
Check chain tension after first hours work and weekly thereafter. Adjust tension when necessary by moving chain tensioner block along slotted mounting. Do not over tension. See Fig. 1 for allowable chain slack.

### Chopper Blades

Check cutting edges on fixed and rotating wheels regularly. When sharpening is necessary, a good quality file or hand stone should be used. Do not use an angle grinder as this will destroy cutting edge.

### Storage

At the end of the feeding season it is recommended that the inside of the Cleana-Feed, especially the chopper box, be well cleaned and that it be liberally coated with waste oil or protective paint.



(Fig. 1)